



SN SERIES

Lubricated Rotary Screw Air Compressors
Constant Speed and Variable Speed Drives

55–75 kW • 75–100 hp



ABOUT SULLAIR

For more than 50 years, Sullair has been on the leading edge of compressed air solutions. We were one of the first to execute rotary screw technology in our air compressors, and our machines are famous all over the world for their legendary durability. As the industry moves forward, Sullair will always be at the forefront with quality people, innovative solutions, and air compressors that are built to last.

Sullair was founded in Michigan City, Indiana in 1965, and has since expanded with a broad international network to serve customers in every corner of the globe. Sullair has offices in Chicago and manufacturing facilities in the United States and China — all ISO 9001 certified to ensure the highest quality standards in manufacturing. In addition, Sullair Suzhou and Shenzhen facilities are ISO 14001 and OHSAS 18001 certified.

Sullair is A Hitachi Group Company

RELIABILITY. DURABILITY. PERFORMANCE.

These are the pillars that drive the quality of Sullair compressed air solutions. It's a promise we keep with every machine we make.

RELIABILITY

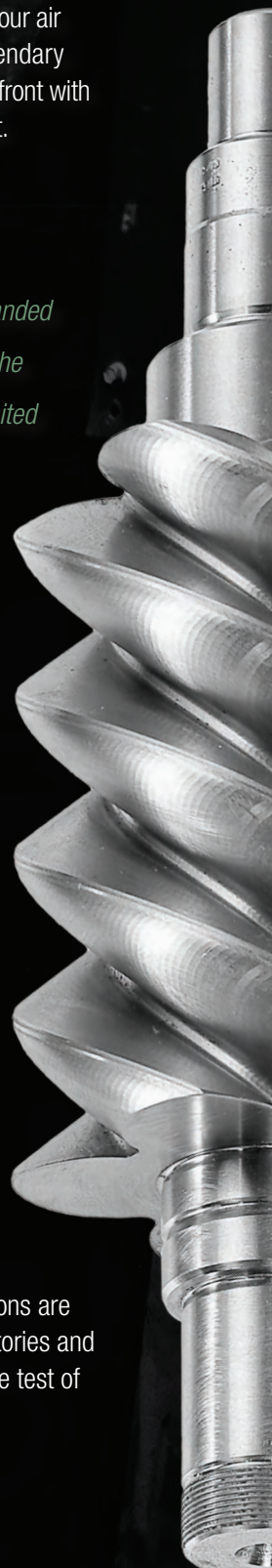
Customers who work with Sullair have found that the intangibles make all the difference — things like trust, confidence, and peace of mind. They go to work every day having full faith in their equipment, as well as the knowledge that dedicated distributors and Sullair personnel have their back every step of the way.

DURABILITY

Bulletproof. Built to last. However you spin it, Sullair compressed air solutions are in it for the long haul, driven by the design of the legendary air end. In factories and shops all over the world, you'll find Sullair compressors that have stood the test of time, running consistently today like they did on day one.

PERFORMANCE

You have high expectations for your operations, and we make machines that share your work ethic. Sullair compressed air solutions do what they're supposed to do, and they do it extremely well for a very long time. And working with us means not only access to clean, quality air, but also the tools you need to optimize this vital resource.





SN SERIES COMPRESSORS

EFFICIENCY

High performance with low energy usage. That's SN Series efficiency — achieved by combining carefully-selected high efficiency components.

DURABILITY

Sullair builds compressors to last. Key to SN Series durability and long-lasting performance: the legendary and proven Sullair air end, a robust 3G enclosure, high quality craftsmanship and a precisely engineered design to tie it all together.

RELIABILITY

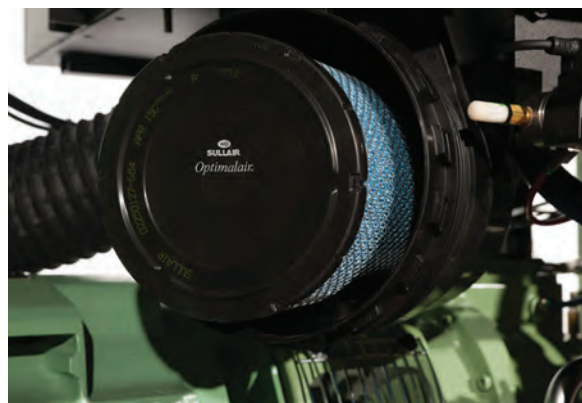
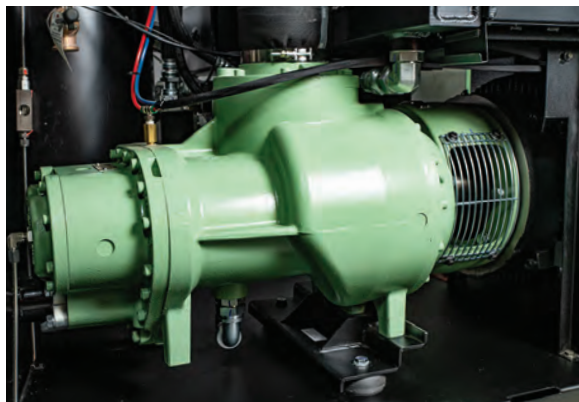
Compressors are key to your operation running smoothly. The reliable performance of the SN Series helps ensure maximum uptime — and maximum confidence.

SERVICEABILITY

Lift-off panels. Oil sampling valve. Tilt and slide oil/aftercooler. Integrated moisture separator. The SN Series package has been designed to make servicing quick and easy.

INNOVATION

Sullair continuously integrates new ideas and technologies for better, more energy efficient compressed air solutions.



SN SERIES

Sullair SN Series air compressors feature the robust, globally recognized air end with the highly efficient asymmetric profile and tapered roller bearings — backed by the Sullair comprehensive 10-year Diamond Warranty.

SN Series 75–100 hp compressors include:

- 3G enclosure design with lift-off panels for easy maintenance
- Improved air/oil separator design
- Oversized oil/aftercooler with higher cooling capacities (46°C/115°F)
- Efficient centrifugal fan and housing
- 7" Sullair Touch Screen Controller (STS): Provides easy access to all key compressor performance parameters
- Easy access oil sampling valve
- Factory filled with 10,000-hour Genuine Sullube®

SN Series compressors can significantly reduce operating and energy costs over the entire compressor life cycle:

- Proven air end with the low-restriction inlet valve
- Premium efficient drive motor design
- Low-pressure-drop air-fluid separation system to prevent energy loss

Improved air filtration translates into:

- Extended separator life
- Improved fluid filter life
- Less lubricant contamination

THE SULLAIR ADVANTAGE

STANDARD FEATURES

- Legendary air end
- Low-restriction inlet valve
- Low carryover air/oil separator design
- High efficiency drive and fan motor
- Integral compressor sequencing
- NEMA 4 Wye-Delta starter cabinet
- TEFC Motor
- 7" Sullair Touch Screen Controller (STS)
- Compact footprint
- Genuine Sullube® 10,000-hour, non-varnishing, biodegradable compressor fluid
- Optimalair® air filter providing 10 times better filtration than other filters

QUIET DESIGN

- Air end, motor, and receiver tank mounted on rubber isolators
- Insulated intake and exhaust louvers
- Low-noise fan

OPTIONS

- Choice of air- or water-cooled
- Cold-weather package
- Weather hood
- EES® heat recovery system
- Spiral Valve technology
- VSD starter
- Magnetic air inlet filters (standard on VSD)
- High ambient package (55°C, 131°F)
Available on SN55 models only
- PristineFG™ food grade compressor fluid
- Oil containment pan (ships loose)
- AirLinx® Remote Connectivity:
 - Provides fast and easy remote monitoring of compressor functions from any connected device: computer, tablet or phone



YOUR DIAMOND DECADE STARTS TODAY

Confirming the Sullair rugged design and commitment to customer satisfaction, all new lubricated stationary air compressors (with discharge pressures up to 150 psig) include comprehensive extended warranty coverage:

10 years air end protection

5 years coverage on:

- Main motor
- Fan motor
- Aftercooler
- Oil cooler
- Separator vessel
- Variable speed drive (if equipped)



GENUINE
SULLUBE
BY SULLAIR

To reduce fluid disposal costs, SN Series compressors are factory-filled with biodegradable Genuine Sullube® 10,000-hour fluid.

- Protects and cleans (no varnish)
- Controls operating temperatures
- Optimal viscosity
- Environmentally friendly
- Reduces fluid loss
- High flash point (505°F/263°C)

SN SERIES 75–100 hp Compressors



VARIABLE SPEED DRIVE

- Robust, reliable and compact
- Maximum efficiency
- Operating consistency

DRIVE COUPLING ELEMENT

- Easy access allows change without disturbing hubs
- Designed for air end/motor protection

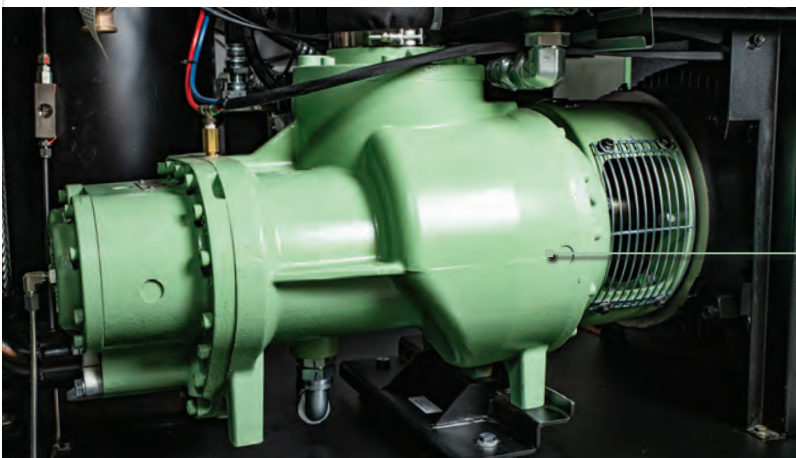
AFTERCOOLER/OIL COOLER

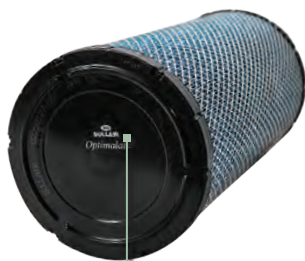
- Oversized two-piece design helps eliminate thermal shock
- Integrated moisture separator
- Rated at 46°C/115°F



LEGENDARY SULLAIR AIR END

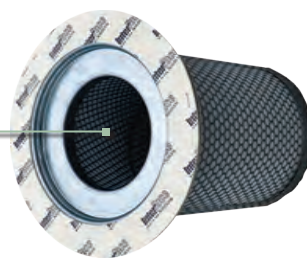
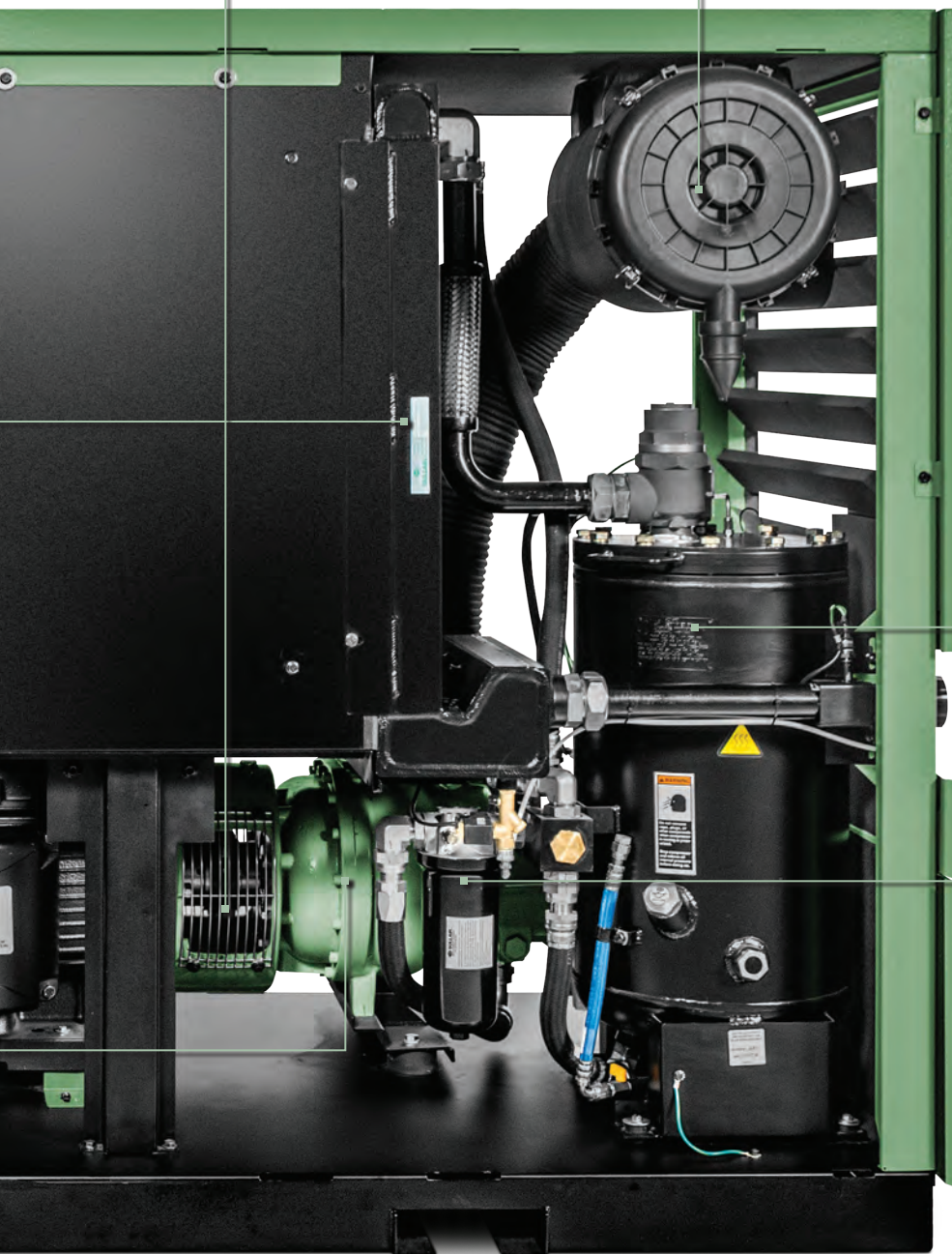
- Asymmetrical rotors made in the USA
- Durable
- Proven bearing design
- Backed by 10-year Diamond Warranty





SULLAIR OPTIMALAIR® AIR FILTER

- Provides industry's finest inlet filtration
- Keeps fluid clean and extends internal component life
- Reduced pressure drop during operating life results in energy savings
- 99.95%+ overall efficiency/0.4 micron



SULLAIR OPTIMIZER™ AIR-FLUID SEPARATOR

- High-efficiency media
- Low pressure drop for reduced power consumption
- Less than 3 ppm carryover to reduce make-up fluid



OIL SAMPLING VALVE

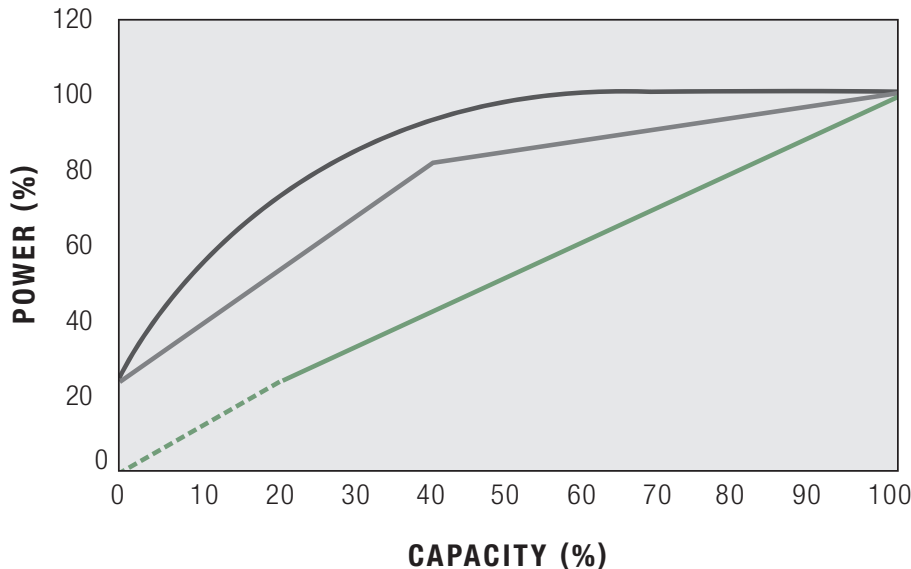
- Easy push button, metered valve allows for sampling while machine is in operation
- Simplifies maintaining your Diamond Warranty

7500V model shown

AIR COMPRESSOR CAPA

VARIABLE SPEED DRIVE (VSD)

PART-LOAD PERFORMANCE ASSESSMENT



- Single-Stage Lubricated Load/Unload (based on one gallon/storage per cfm)
- Single-Stage Lubricated Inlet Modulation with Blowdown
- Single-Stage Lubricated Variable Speed



Reference: Compressed Air and Gas Handbook, 6th Edition, pages 221-223.

FOR MAXIMUM ENERGY EFFICIENCY AND OPERATING CONSISTENCY

Sullair Compressors with VSD Provide:

- Excellent energy savings
- Relief from potential peak demand charges
- Possible utility company rebates
- Stable system pressure
- Consistent product quality
- Reduced system air leaks
- Reduced storage requirements
- Flexibility for future growth
- Lowest life-cycle cost
- DC link choke

The chart above is a representation of nominal control systems for generic comparative purposes. A detailed and accurate comparison of specific compressor models is available from your authorized distributor.

YOUR COMPRESSED AIR SYSTEM CAN IMPROVE YOUR BOTTOM LINE:

35% energy savings in the first five years

In just five years, the electrical power cost to operate a standard compressor can be more than six times greater than its purchase price.

Total compressor flexibility

Sullair VSD compressors provide flexibility to vary both capacity and pressure. This allows you to “grow” your air system without adding more compressors.

Soft start is standard with unlimited starts and stops

- No need for Wye-Delta and other soft starters
- No need to control the number of hot or cold starts
- Unlimited starts and stops save electrical costs
- Avoids high electrical current at start-up

CITY CONTROL OPTIONS

SPIRAL VALVE TECHNOLOGY

How the Spiral Valve Operation Works

The compression volume varies to suit the air demand by progressively opening or closing internal bypass ports on the air end.

Capacity is matched to system demand, reducing cycling time and extending component life.

Part-load capacity and efficiency can produce energy savings from 17–35%.

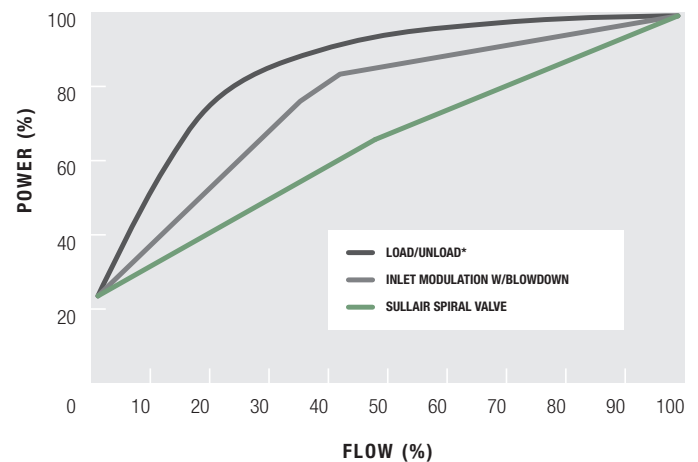
Variable Displacement Air End

The Sullair variable displacement air end maintains system pressure to the plant to match air demand. Since the Spiral Valve compressors use large, efficient, slow running rotors, a lower power consumption is achieved at the top end of capacity. Oil foaming does not occur, air is not wasted to atmosphere, and bearings last longer.

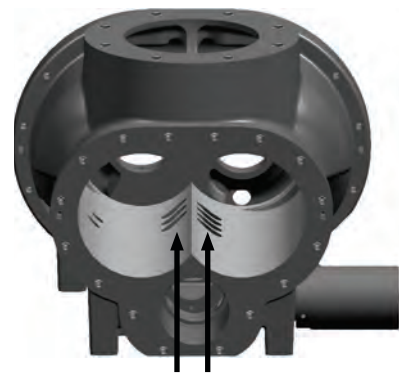
The motor and air end run at optimum speed and therefore maintain optimum efficiency throughout the full variable output range.

Sullair Spiral Valve compressors react quickly to rapid changes in demand. The effective rotor length is progressively reduced as the demand is reduced which provides the most efficient part load control system to 55% output. This system is extremely simple and provides a cost effective, energy efficient control alternative.

COMPRESSOR PERFORMANCE COMPARISON

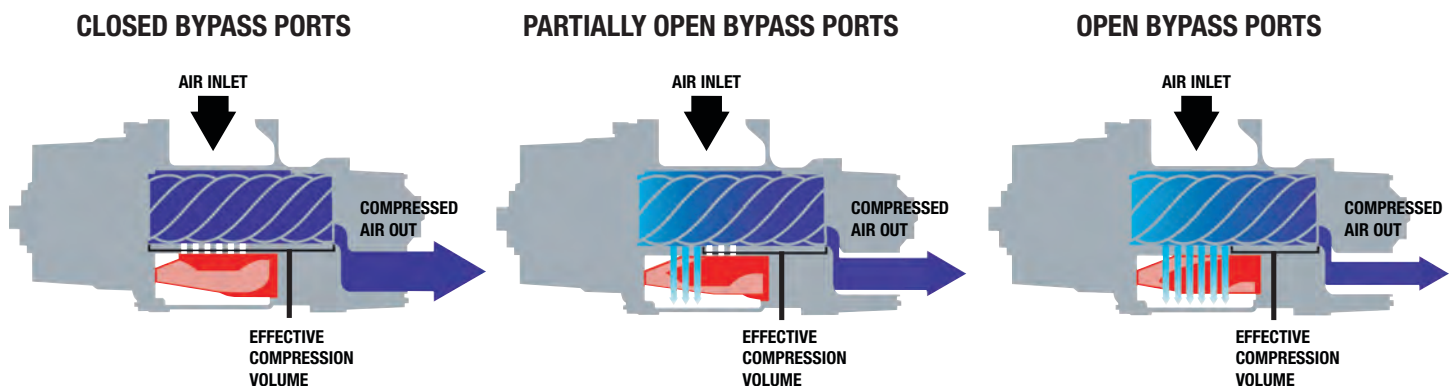


The chart above is a representation of nominal control systems for generic comparative purposes. A detailed and accurate comparison of specific compressor models is available from your authorized distributor.

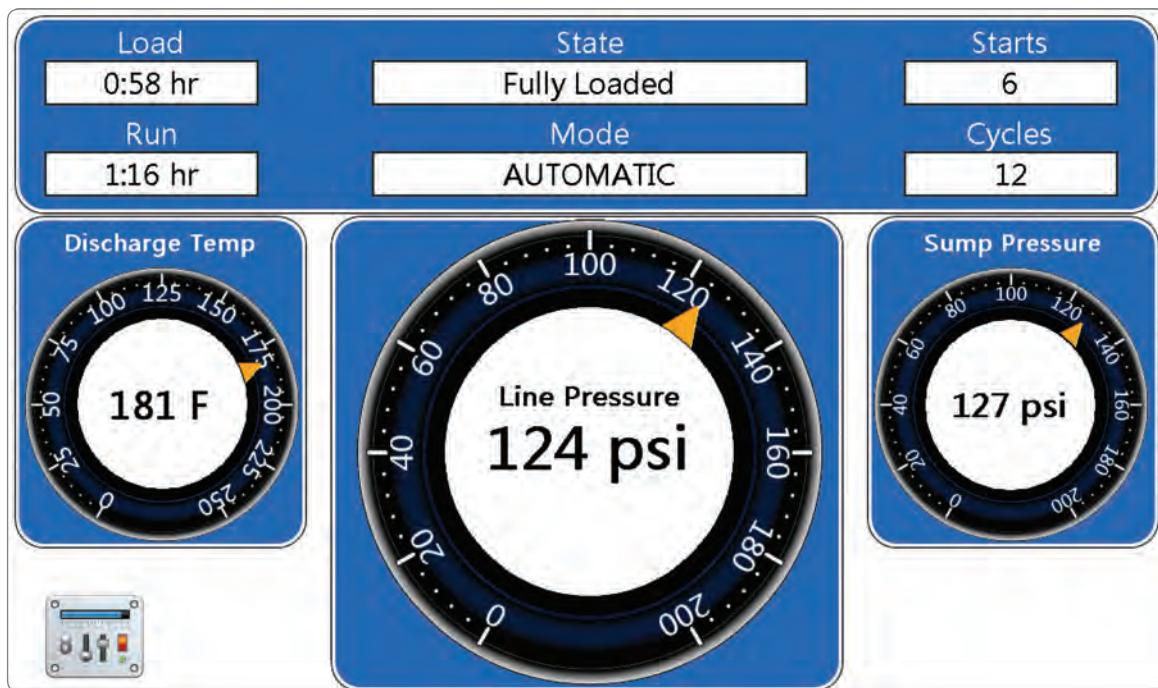


BYPASS PORTS IN STATOR

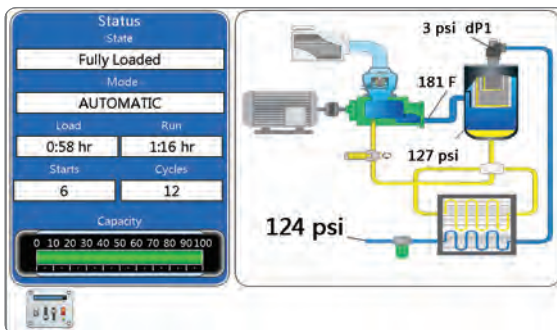
Rotors removed to show Bypass Ports



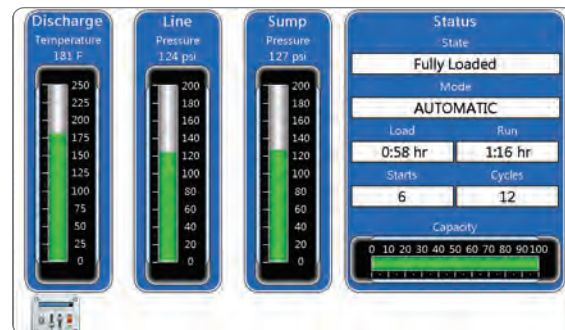
ULTIMATE IN USER CONTROL



Actual Size



Optional Mimic Screen



Optional Analog /Digital Screen

The Sullair Touch Screen (STS) Controller utilizes a large 7" color screen for easy viewing in any lighting conditions

MENU-DRIVEN SCREENS PROVIDE EASY ACCESS TO ALL COMPRESSOR CONTROLS

- Support for sequencing up to 16 compressors
- More communication capabilities: Ethernet, ModBus RTU and ModBus TCP, Cellular (AirLinx® service)
- Remote access capability via VNC (Virtual Network Computing) protocol
- Start/Stop scheduling with pressure control
- NEMA 4 environmental protection
- Discreet Start and Stop .87 in (22 mm) buttons
- Bright operating status LEDs even when display is dimmed
- Expandable I/O for additional sensor monitoring and output control
- Supports power monitoring
- Trend graphing of operational parameters
- Most controller functions and adjustments via protected controller submenus
- New data download capabilities

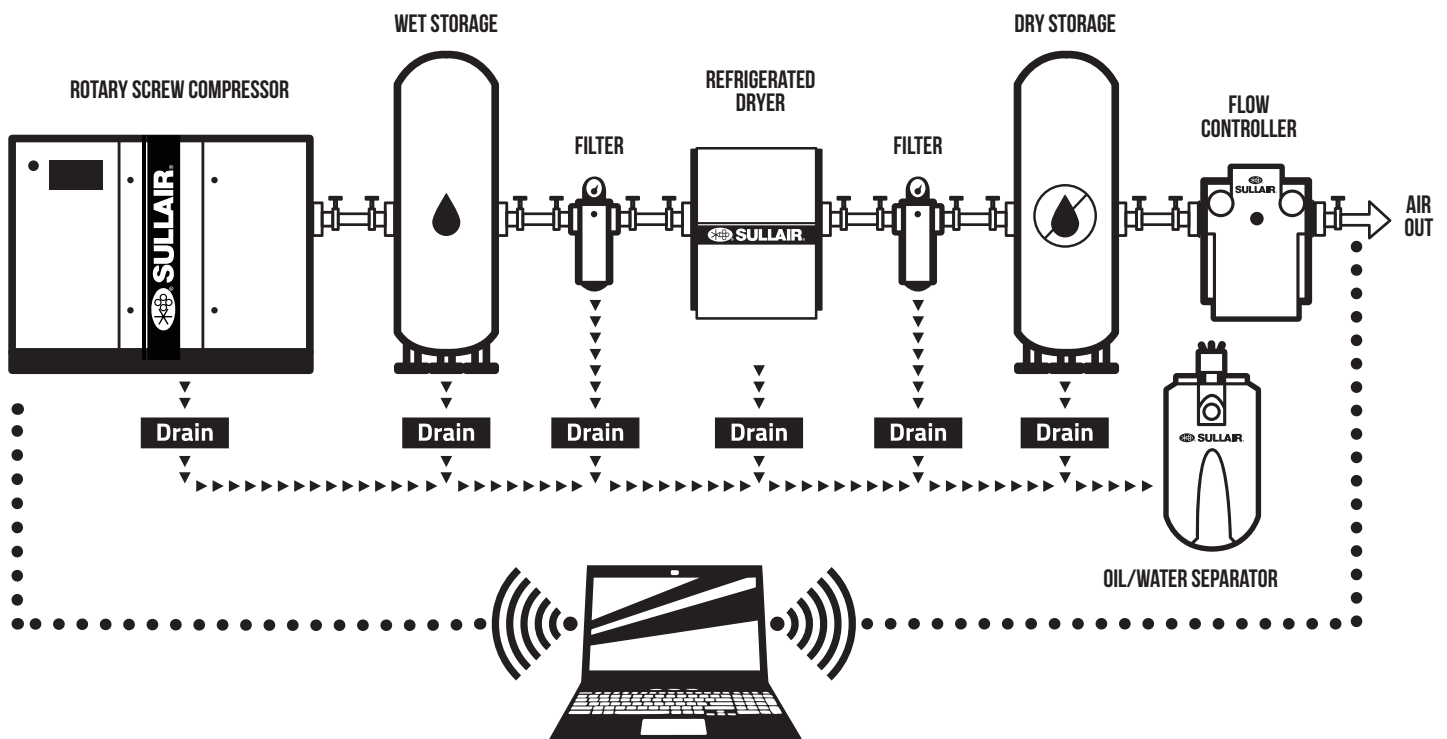
STATIONARY AIR POWER SYSTEMS

With our expertise in analyzing, managing and controlling compressed air, Sullair offers total compressed air solutions that help you reduce energy costs and improve productivity.

- Plant air audits
- Energy efficient products
- Compressed air system controls
- Equipment to monitor and manage air systems
- Air distribution products
- After-purchase support

Plus a full complement of OEM parts and lubricants to help keep your compressors running optimally.

Each component of the system is carefully matched for capacity and pressure to provide maximum performance and energy efficiency.



TECHNICAL SPECIFICATIONS

FOR MORE INFORMATION, CONTACT YOUR
LOCAL AUTHORIZED SULLAIR DISTRIBUTOR.

| 60Hz FREQUENCY | | | FULL LOAD CAPACITIES | | | | | | | | WEIGHT (ODP) | | DISCHARGE CONNECT | DIMENSIONS | SOUND LEVEL |
|----------------|-------|----|----------------------|-----------------|-----------------|-----------------|-----------------|------------------|-----------------|------------------|--------------|------|-------------------|--|-------------|
| MODEL # | MOTOR | | 100 psi acfm | 7 bar m³/min | 125 psi acfm | 9 bar m³/min | 150 psi acfm | 10 bar m³/min | 175 psi acfm | 12 bar m³/min | lbs | kg | in | L x W x H in (mm) | dBA |
| | hp | kW | | | | | | | | | | | | | |
| SN5500 | 75 | 55 | 377 | 10.68 | 344 | 9.74 | 297 | 8.41 | 277 | 7.84 | 3248 | 1473 | 2" NPT | 87.5 x 43.4 x 68.5 (2223 x 1103 x 1740) | 70-73 |
| SN5500V | 75 | 55 | 377 | 10.68 | 341 | 9.66 | 306 | 8.66 | 278 | 7.87 | 3346 | 1518 | | | |
| SN5500S | 75 | 55 | 387 | 10.96 | 354 | 10.02 | — | — | — | — | 3390 | 1538 | | | |
| SN7500 | 100 | 75 | 490 | 13.88 | 444 | 12.57 | 398 | 11.27 | 370 | 10.48 | 3476 | 1577 | | | |
| SN7500V | 100 | 75 | 500 | 14.16 | 457 | 12.94 | 420 | 11.89 | 394 | 11.16 | 3729 | 1691 | | | |
| SN7500S | 100 | 75 | 500 | 14.16 | 457 | 12.94 | 418 | 11.84 | 371 | 10.51 | 3618 | 1641 | | | |